

Community Lutheran Church

30322 Via Con Dios • Rancho Santa Margarita, CA 92688

(949) 858-0307 • FAX (949) 858-5445

web site-www.clcrsm.org

COMMUNITY NEWS

November 2011

Pastor's Message - "I thank my God in all my remembrance of you." Philippians 1:1

As I think back over the years here at Community Lutheran Church I count myself blessed. These years with you have been wonderful, challenging, loving, and filled with unexpected joy. I will remember you with a deep sense of love and appreciation.

When I came here nearly 10 years ago CLC was a different church and Rancho Santa Margarita was a different community. Both have gone through significant changes. RSM became incorporated, a beautiful community center was built, I was privileged to be part of the 911 first anniversary remembrance at RSM lake, and I have been blessed to be part of the planning sessions of the New Year's Eve Family Night celebration in Central Park. CLC had its changes also. We experienced changes in staff, the celebration of our 30th Anniversary in which all predecessor pastors were in attendance. We built a beautiful patio, and have experienced opportunities to serve others through Corazon, Adopt an Angel, and Habitat for Humanity, just to name a few. We have worshiped on Saturday night, we offered a family VBS in the summer and of course, the backpacking program which has continued for 27 years. There are so many things that we have experienced together for which I give thanks.

As I reflect back over the years spent here I can't help but see the hand of God and recognize how God moves in unexpected ways. Martin Luther once described this as the "alien work" of God. He proposed that God works in ways and means that we would not recognize nor attribute to God. How true is that! Whether that may be seeking a new call (my situation) or wondering what kind of pastor will come here (your situation) God is present every step of the way. And not just present as a bystander but present actively, shaping, affecting, and guiding our lives. I know God is here now doing marvelous things that at the moment we may not recognize. Perhaps someday, as we look back at this moment, we will see God's hand accomplishing his will through what Martin Luther described as an "alien work".

I will miss you. I have felt and known your love and I am grateful for that. It is my prayer that the love of God that brought us and bound us together will continue to strengthen and encourage you in the days ahead.

"I thank my God in all my remembrance of you."

Pastor Greg



Treasurer's Report

	YTD BUDGET	YTD ACTUAL
Receipts--Offerings	\$285,000	\$250,479
Net Receipts—Preschool	154,896	184,740
Receipts—Building Fund	0	300
Receipts—Other	2,660	6,869
Receipts-Dedicated Funds Used	<u>0</u>	<u>7,862</u>
Total Receipts	\$442,556	\$ 450,250
Total Expenditures (Non-Preschool)	<u>(458,807)</u>	<u>(444,411)</u>
Excess Receipts over Expenditures	<u>(\$ 16,251)</u>	<u>\$ 5,839</u>

Date	Attendance	Offerings
Sept 4	147	\$ 5,204
Sept 11	194	\$ 3,918
Sept 18	188	\$ 7,655
Sept 25	163	\$ 5,639
EFT Offer.		\$ 2,710
Total	692	\$25,126

Offering income: is \$34,521 less than budgeted year-to-date.

Preschool net income: is \$8,996 more than budgeted year-to-date.

Non-Preschool Expenses: are \$14,396 less than budgeted, year-to-date.

Prior Year Comparison: Offering income for 2011 is 8% less than 2010's and Preschool net income is 3% more in 2011 versus 2010. Our budget provides for a 5% increase in offerings during 2011.

Accounts Payable: As of 9/30/11, we owe \$22,890 (\$20,000 to the preschool and \$2,890 to various vendors).

Detailed information is available upon request from Tracy Cantin (tcantin@aol.com).

Schwab Account: The church now has a Schwab brokerage account. This way members can donate shares of stock as an alternative to cash offerings. Not only can you help the church, you can avoid paying capital gains tax on appreciated stocks. For more information, please contact Tracy Cantin.



Stewardship Board: A path to a closer relationship with God

To whom are you grateful? Did your parents care for you, guide you and love you unconditionally? Do you have friends who are with you to celebrate the good times and to work through the hard times? Does a clerk or a service person go the extra mile and deliver service beyond the requirements? Does someone on the freeway make room for you to change lanes? Some of these examples are significant and some are just a moment in your day, but in each case, I expect you either try to return the love/assistance/kindness or pass it on to someone else. We respond to these people. God fills all those roles, even to giving his Son to die for our sins. It is only natural that we want to respond to this undeserved gift and unconditional love. We share our God given time, talent and treasure, not because we must, but because it is the only type of response we can give. In October, we focused on sharing our treasure so that Community Lutheran Church can continue to provide meaningful worship experiences, education, support and fellowship. We asked you to commit a portion of your income in response to God's undeserved love. The commitment is to God, a promise to participate in his boundless love. Whether this is a first time for you, or something you do each year, be aware in the coming year of your priorities. Make sure that your heart is where your treasure is.

Pat Elliot, Stewardship Chair

UPCOMING EVENTS:

Sunday, November 20th: H.S. Youth Group Holiday Pie & Dessert Fundraiser

Get your holiday pie and dessert baking done by the H.S. Youth Group. We will be selling pies and other dessert items on Sunday November 20th after the Annual Congregational Meeting and after the second worship service. Proceeds of this event will go toward the Youth Gathering Trip to New Orleans in July 2012.

Wednesday November 23rd: No Confirmation

Reminder: Confirmation class will not meet on the Wednesday before Thanksgiving. We will, however, have a Thanksgiving Eve service that we encourage you and your family to come be part of.



November Events 2011



Annual Meeting-Sunday November 20th between services.
We encourage all confirmed members to be present to vote on the 2012 budget and new council members.

Please join us for a Thanksgiving Eve Worship Service beginning at 7:15 P.M. on Wednesday, November, 23rd.



“Adopt an Angel”

Sign-ups for the Southwest Community Center in Santa Ana is starting on All Saints’ Sunday, November 6th. Linda Roberts will have the names and info on 150 children that will need Christmas gifts. Gifts need to be returned to Church on Sunday, December 4th. See the table on the patio on November 6th or contact Linda Roberts at (949) 858-2871.



Community Food Collection

We will be collecting non-perishable foods for the South West Community Center during November through December 4th. A shopping list will be in the bulletins and on the counter in the Narthex. These foods will be delivered in December with the “Adopt an Angel” gifts.

Food For Families:

Gift cards/certificates to grocery stores
Canned meats and Fish
Peanut butter and jelly
Macaroni and Cheese
Canned Fruits and Vegetables
Dried beans, Rice and Macaroni
Chili Beans and Pork and Beans
Dry Cereal and Oatmeal
Soup, Top Ramen

Food for the Homeless:

Food items in single serving portions and in pop top cans - tuna, Vienna sausages & Spam
Cup of Soup
Beanie Wienies
Juice
Crackers & Cookies
Fast food certificates

Young @ Heart will meet on Sunday, November 6 at 4:00 PM at the church. Details in the mail soon!





For the November 14th meeting we are reading From the Heart by Robin Roberts. For December we are reading The Samurai's Garden by Gail Tsukiyama. This group meets in the church office at 7:00 pm. Join us for a lively discussion!



Fair Trade Coffee

Fair Trade Coffee old favorites like Sisters' Blend and Breakfast Blend are joined by a delicious new offering: Breakfast Blend Decaf.

Pour Justice to the Brim! Lutheran World Relief and Equal Exchange are proud to offer these special blends of coffee. Sisters Blend honors women coffee farmers for their hard work in producing this high-quality coffee and providing leadership in their communities. Breakfast Blend honors Lutheran women in the U.S., who have taken the challenge to become active advocates for Fair Trade. Through Fair Trade, farmers earn a fair price for their products, have access to affordable credit and gain long-term trading partners they can trust—all elements missing in the conventional coffee market. With your continued support, farming communities are able to invest in education, health care and environmentally sustainable techniques.



Stephen Ministry

Listen: To Hear with Thoughtful Attention

Did you ever talk to someone, but felt as if that person just wasn't listening? Stephen Ministers are trained to listen well. They will hear what you have to share and respond lovingly and non-judgmentally—rather than telling you what you should or shouldn't have done. Stephen Ministry promises complete confidentiality of all you share. If you need someone who will really listen to you as you work through a problem in your life, consider Stephen ministry. Call Mary Stohlman. 858-0307.

Prayer Chain

...just as the Son of Man came not to be served but to serve and to give life as a ransom for many. Matthew 20:28

Tennis professionals tell of hitting the ball in the sweet spot of the racket for maximum results. God leads us to find our sweet spot of service where our God-given gifts intersect with His kingdom and purpose. We serve as Jesus did in yielding his gifts and passions to the Father's kingdom's purpose by giving his life as a ransom for many.



So take a minute and think about what your sweet spot of service might be. Ask yourself: What is my passion? What are my strengths? Where do I find fulfillment in service? The answer is your Christian SWEET SPOT: A place to serve the church and others. It may be supporting others during a time of transition with prayers and concern, or somewhere else, but NOW is the time to look and find a place to serve. If you want to join in the prayer chain support of members and family and friends of the congregation in their times of concern, please email Mary Stohlman at mstohlmn@yahoo.com.



Bible class for 3rd graders

Robby Hadley, Sean Mooney and Austin Wegner completed the class in October and received their Bibles on October 30th, Reformation Sunday.

First Communion Class

Classes for children interested in receiving Communion and their parents will be held on Tuesday, November 1st at 3:30 PM or Saturday, November 5th at 10:00 AM. Please sign-up in the narthex if you have a child that is interested in participating. The class will be an hour long and a parent should attend with the child.

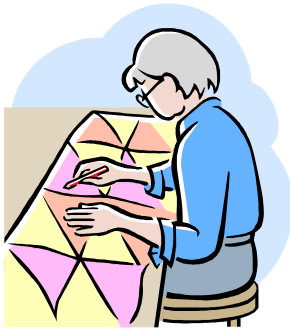




Please Welcome Our New Members!

Please say hello to Nancy Callanan and Carol Leiendecker who joined Community Lutheran Church on October 23rd.

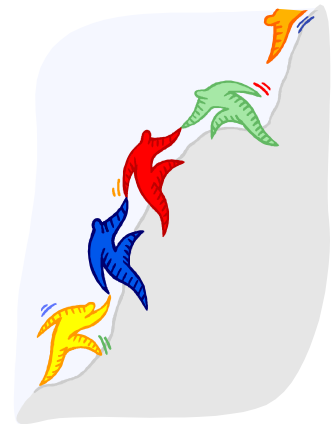
Quilting and Prayer shawl ministry



We will be quilting on Monday, November 28th at 6:00 PM. Those working on Prayer Shawl Projects are always welcome to join us. This Ministry meets on the 4th Monday of the month at 6:00 PM. All quilters, knitters, crocheters and wannabes are invited to join us!

Caught Serving.....

Thanks to the Quilters, Barb Krouse and Joe Pospichal for taking care of the quilts and layettes for delivery to Lutheran World Relief! Thanks to Bill Blume for working on the planter on the office Patio. Thanks Friends!



Women's Bible Study

Bible study held Tuesday, November 22nd at 7:00 PM in the home of Jane Wielenga. Please contact Mary Stofilman for details.

LMDG - Lutheran Magazine Discussion Group



Please join us on Wednesday, November 9th and 30th at 11:00 AM in the Conference Room. We will be discussing an article from the Lutheran Magazine. Get your latest copy of the magazine in the Narthex.



Advent Begins on Sunday November 27th! The Christmas tree, the outside lights and other decorations will be put up on Saturday November 26th beginning at 9:00 AM! Want to help? Call Barb Krouse at (949) 459-6862. The Christmas tree will be decorated during Sunday School on November 27th. Plan now to join in the fun and Christmas Spirit There will be good treats to eat too!

Advent Worship on Wednesdays will be at 7:00 PM on November 30th, December 7th, and 14th.



Thanksgiving Eve Worship Wednesday, November 23rd at 7:15 PM

I Thessalonians 5:18

“In everything give thanks; for this is the will of God in Christ Jesus concerning you.”

Celebrating November Birthdays

Lauren Hahn	11/1	Nicholas Gurnard	11/16
Autumn Leroux	11/1	Breanna Olson	11/16
Larry Yorty	11/1	John Sullivan	11/16
Sienna Franich	11/2	Sandra Barker	11/17
Robert Simoneaux	11/3	Amy Riley	11/17
Kristin Wielenga	11/5	Kathryn Conrad	11/18
Rich Robbins	11/7	Jonathan Stout	11/22
Renee Allen	11/9	Ava Laudorn	11/23
Lindsey Beaman	11/9	Austen Wegener	11/23
Sean Beaman	11/9	Danielle Bajza	11/24
Tom Gaworski	11/10	Kyle Borgschatz	11/24
Andrew Brown	11/12	Hayden Fick	11/26
Debbie Reideler	11/12	David Figueroa	11/27
Richard Chun	11/14	Brittany Barry	11/28
Dave Newby	11/15	Jean Wilkey	11/30

